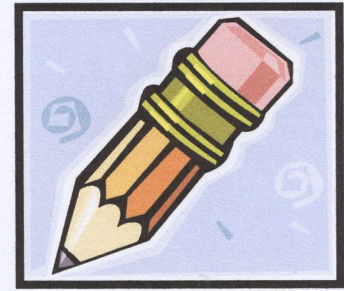


# First Draft Essay Grading Form



Below are the specific features for evaluating the first draft of your essay. Each item is scored from 1 to 10, with 1 being the lowest and 10 being the highest. If you fall below a six in any area, you should revise to pull the grade up in that area. Bear in mind that these numbers can directly translate into percentages with a 6 being 60% or a D-, a 7 being 70% or a C-, an 8 being 80% or a B- and so forth.

| Features   | Revise |   |   |   |   | Accept |   |   | Superior Quality |    |
|--|--------|---|---|---|---|--------|---|---|------------------|----|
| <b>Organization:</b>   |        |   |   |   |   |        |   |   |                  |    |
| The method of organization is well-suited to the topic.  | 1      | 2 | 3 | 4 | 5 | 6      | 7 | 8 | 9                | 10 |
| <b>Coherence:</b>  |        |   |   |   |   |        |   |   |                  |    |
| <b>Transitions</b> are used effectively to help the essay flow.  | 1      | 2 | 3 | 4 | 5 | 6      | 7 | 8 | 9                | 10 |
| <b>Content:</b>  |        |   |   |   |   |        |   |   |                  |    |
| <b>Essay introduction</b> has a strong "hook" and logical, direct organization with the thesis at the end. | 1      | 2 | 3 | 4 | 5 | 6      | 7 | 8 | 9                | 10 |
| The <b>thesis statement</b> is strong and direct with all the "parts" included.                            | 1      | 2 | 3 | 4 | 5 | 6      | 7 | 8 | 9                | 10 |
| The <b>body paragraphs</b> are well organized with strong topic sentences and support for those sentences. | 1      | 2 | 3 | 4 | 5 | 6      | 7 | 8 | 9                | 10 |
| The examples/details in the essay are ample <b>support</b> for the thesis.                                 | 1      | 2 | 3 | 4 | 5 | 6      | 7 | 8 | 9                | 10 |
| The <b>conclusion</b> is well organized and restates/summarizes the main ideas in the essay.               | 1      | 2 | 3 | 4 | 5 | 6      | 7 | 8 | 9                | 10 |
| <b>Vocabulary:</b> Vocabulary is strong and varied.  | 1      | 2 | 3 | 4 | 5 | 6      | 7 | 8 | 9                | 10 |

**Total Points:**

**Percentage:** /80

**Grade:**